

*Desoutter*



**Industrial** Tools



## **ERS** Electric Transducerized Screwdriver

*Traceability*  
*Accuracy*  
*Error proofing*

**More Than Productivity**



# ERS - Electric Transducerized Screwdriver

***All your needs and expectations...***

## **Ergonomics**

Light,  
compact  
soft grip

## **Flexible**

Lever start and  
push start in the  
same tool

## **Traceability & Accuracy**

Transducer  
technology

## **Joint Visibility**

Front LEDs



**Reliable**

Long life gears  
Brushless motor

**Visible & Programmable reporting**

LED System

**Configurable reverse button**

- Alternate
- 1 shot
- 2 shots



Good Report



Bad Report

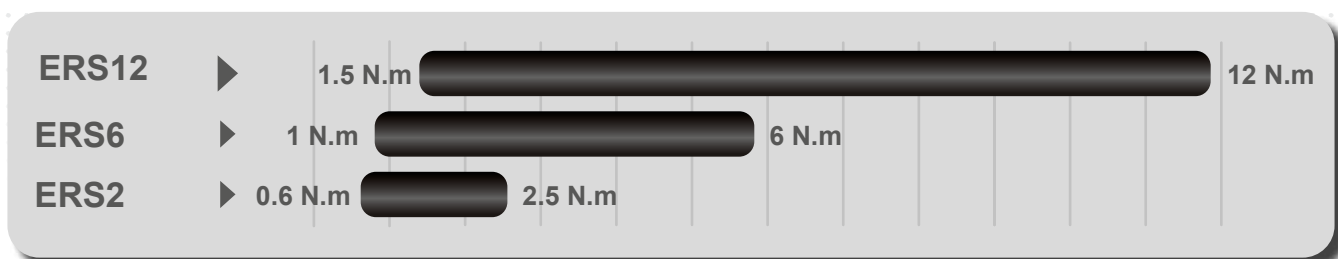


Programmable

Tool Ready, Tool in Cycle, Maintenance Alert, and more.

***...in the palm of your hand***

# COMPREHENSIVE RANGE



## A Straight



## B Angle Head



## C Fix. Spindle



PIC REF	Model	Part Number	Output	Torque (Nm)		Torque (in.lbs)		Speed (rpm)	Weight	
				Min	Max	Min	Max		kg	lb
	ERS2	615 165 688 0	Hex 1/4"	0.6	2.5	5.3	22.1	3000	0.7	1.54
<b>A</b>	ERS6	615 165 689 0	Hex 1/4"	1.0	6	8.8	53.1	1725	0.7	1.54
	ERS12	615 165 690 0	Hex 1/4"	1.5	12	13.3	106.2	950	0.7	1.54
	ERS2-M20	615 165 691 0	Hex 1/4"	0.6	2.5	5.3	22.1	3000	0.7	1.54
<b>A</b>	ERS6-M20	615 165 692 0	Hex 1/4"	1.0	6	8.8	53.1	1725	0.7	1.54
	ERS12-M20	615 165 693 0	Hex 1/4"	1.5	12	13.3	106.2	950	0.7	1.54
	ERS22-M20	615 165 916 0	Hex 3/8"	6	22	4.4	16.2	380	1.05	2.3
	ERSA2	615 165 697 0	Hex 1/4"	0.6	2.5	5.3	22.1	2500	1.0	2.2
<b>B</b>	ERSA6	615 165 698 0	Hex 1/4"	1.0	6	8.8	53.1	1450	1.0	2.2
	ERSA12	615 165 699 0	Hex 1/4"	2.0	12	17.7	106.2	800	1.0	2.2
	ERSA27	615 165 917 0	Hex 3/8"	8	27	5.9	19.9	280	1.25	2.7
	ERSF2	615 165 694 0	Hex 1/4"	0.6	2.5	5.3	22.1	3000	0.7	1.54
<b>C</b>	ERSF6	615 165 695 0	Hex 1/4"	1.0	6	8.8	53.1	1725	0.7	1.54
	ERSF12	615 165 696 0	Hex 1/4"	1.5	12	13.3	106.2	950	0.7	1.54

## ACCESSORIES

PIC REF	Description	Part Number
1	Long lever Kit	615 321 254 0
2	Suspension yoke kit	615 791 080 0
3	Cable extension 5m	615 917 222 0
	Cable extension 10m	615 917 224 0
4	Reaction handle ECS/ERS	615 397 016 0
5	Balancer	
6	Bit tray	Refer to Desoutter General Catalog
7	Arms	
8	Posco 500	

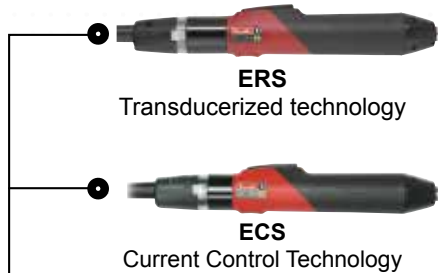


# ERROR PROOFING AND FLEXIBILITY

## CVIR controller

Advanced control unit with flexibility of technology.

Easy integration in your line with high choice of connectivity

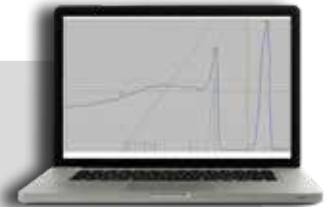
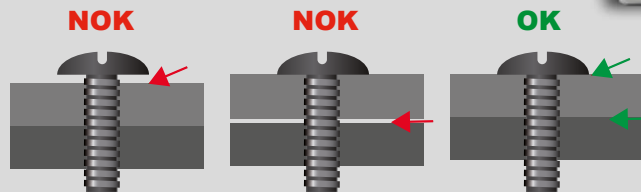


CVIR II	
Part Number	615 932 6810
Cycles	50
Sequence	1
Phases	15
Results	up to 10 000
Curves	10
Tools	ECS/ERS
Strategies	Torque
	Angle
	Seating Detection
	Yield point

## Innovative Tightening Strategy

### Seating Detection

Detect the screw head contact on your part by **torque rate management**, even with material variation.



### Quality Guaranteed

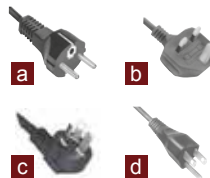
More information on [www.desouttertools.com](http://www.desouttertools.com)

## SOFTWARES, UPGRADES KITS...

### Power cord

to be ordered with the controller

PLUG	Description	Part NO.
a	European	615 917 201 0
b	UK	615 917 202 0
c	Chinese	615 917 206 0
d	US	615 917 203 0



### Fieldbus / Protocol

Model	Part NO.
Ethernet IP Module	615 927 594 0
Profibus DP Module	615 927 595 0
Profi net Module	615 927 596 0
Devicenet Module	615 927 599 0
CC-Link Module	615 927 598 0
MODBUS TCP Slave	615 927 615 0

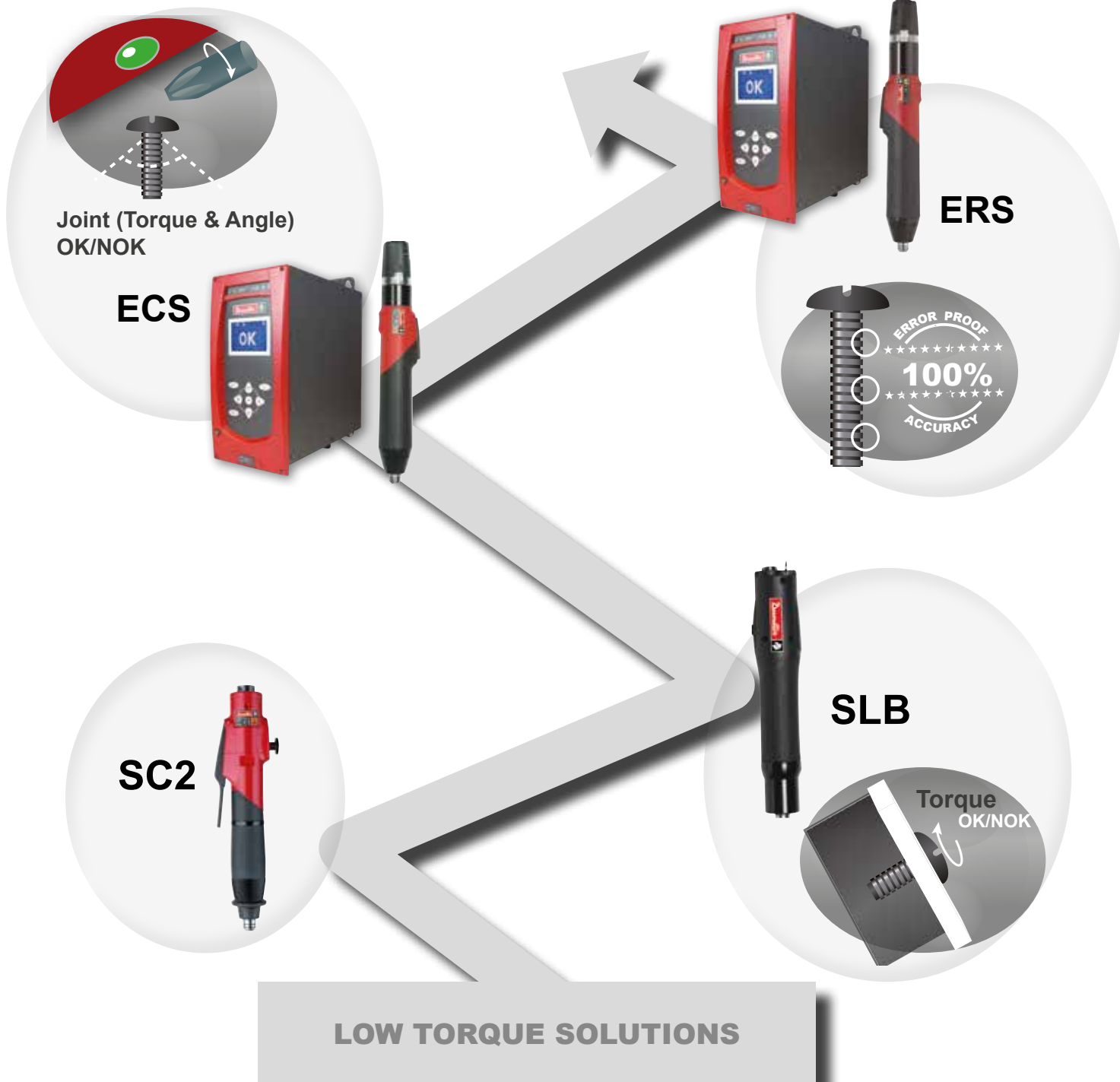
### Softwares

Model	Part NO.
CVI PC2000-STD 1 install	615 927 522 0
CVI PC2000 advance 1 install	615 927 523 0
CVI-net 1 controller	615 927 523 0
Open Protocol 5 licences	615 927 581 0

### Optional Accessories

Model	Part NO.
PC cable length 2 m (78.7")	615 917 047 0
37 pin D-Sub female I/O adapter	615 919 003 0
Shelf support - Aluminium profile	615 397 403 5
IP54 option	615 932 684 0

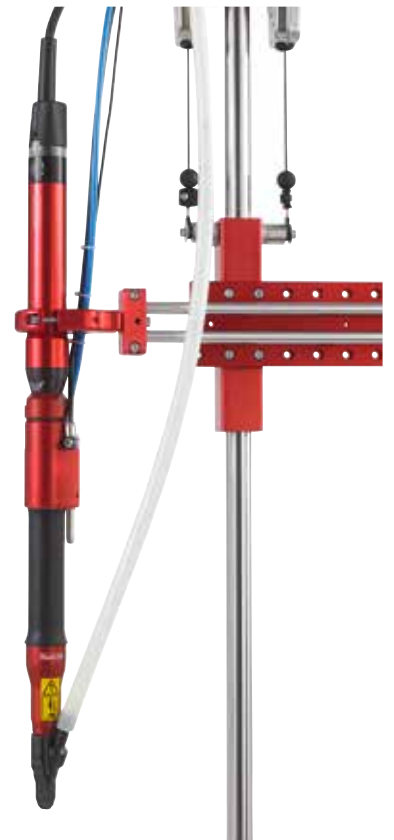
# FOR SUPPLIER Low Torque Solutions



# PRODUCTIVITY AND ADVANCED ERROR PROOFING

## **BOOST YOUR PRODUCTIVITY**

Complete range of screw feeding solution from simple hand held station to advanced fixtured units to improve your productivity on your assembly line.



## **DECREASE YOUR TASK TIME**



In combination with the **Posco Vision**, an advanced positioning control system with visualisation, the **ERS station** will give a high level of error proofing control and help you to decrease your defects and quality costs.

More information on [www.desouttertools.com](http://www.desouttertools.com)

## **SECURE YOUR PROCESS**

# More Than Productivity



[www.desouttertools.com](http://www.desouttertools.com)

English  
© Copyright 2014  
October 2014 - Issue 1