

Desoutter



Industrial Tools



ERS Electric Transducerized Screwdriver

Traceability
Accuracy
Error proofing

More Than Productivity



ERS - Electric Transducerized Screwdriver

All your needs and expectations...

Ergonomics

Light,
compact
soft grip

Flexible

Lever start and
push start in the
same tool

Traceability & Accuracy

Transducer
technology

Joint Visibility

Front LEDs



Reliable

Long life gears
Brushless motor

Visible & Programmable reporting

LED System

Configurable reverse button

- Alternate
- 1 shot
- 2 shots



Good Report



Bad Report

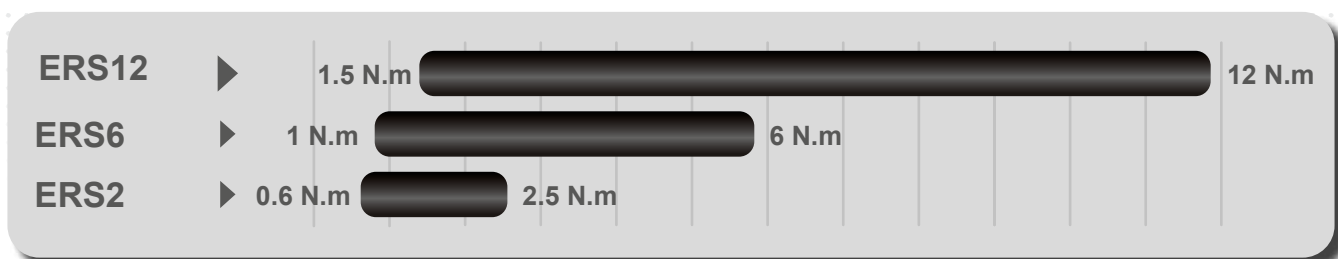


Programmable

Tool Ready, Tool in Cycle, Maintenance Alert, and more.

...in the palm of your hand

COMPREHENSIVE RANGE



A Straight



B Angle Head



C Fix. Spindle



PIC REF	Model	Part Number	Output	Torque (Nm)		Torque (in.lbs)		Speed (rpm)	Weight	
				Min	Max	Min	Max		kg	lb
	ERS2	615 165 688 0	Hex 1/4"	0.6	2.5	5.3	22.1	3000	0.7	1.54
A	ERS6	615 165 689 0	Hex 1/4"	1.0	6	8.8	53.1	1725	0.7	1.54
	ERS12	615 165 690 0	Hex 1/4"	1.5	12	13.3	106.2	950	0.7	1.54
	ERS2-M20	615 165 691 0	Hex 1/4"	0.6	2.5	5.3	22.1	3000	0.7	1.54
A	ERS6-M20	615 165 692 0	Hex 1/4"	1.0	6	8.8	53.1	1725	0.7	1.54
	ERS12-M20	615 165 693 0	Hex 1/4"	1.5	12	13.3	106.2	950	0.7	1.54
	ERS22-M20	615 165 916 0	Hex 3/8"	6	22	4.4	16.2	380	1.05	2.3
	ERSA2	615 165 697 0	Hex 1/4"	0.6	2.5	5.3	22.1	2500	1.0	2.2
B	ERSA6	615 165 698 0	Hex 1/4"	1.0	6	8.8	53.1	1450	1.0	2.2
	ERSA12	615 165 699 0	Hex 1/4"	2.0	12	17.7	106.2	800	1.0	2.2
	ERSA27	615 165 917 0	Hex 3/8"	8	27	5.9	19.9	280	1.25	2.7
	ERSF2	615 165 694 0	Hex 1/4"	0.6	2.5	5.3	22.1	3000	0.7	1.54
C	ERSF6	615 165 695 0	Hex 1/4"	1.0	6	8.8	53.1	1725	0.7	1.54
	ERSF12	615 165 696 0	Hex 1/4"	1.5	12	13.3	106.2	950	0.7	1.54

ACCESSORIES

PIC REF	Description	Part Number
1	Long lever Kit	615 321 254 0
2	Suspension yoke kit	615 791 080 0
3	Cable extension 5m	615 917 222 0
	Cable extension 10m	615 917 224 0
4	Reaction handle ECS/ERS	615 397 016 0
5	Balancer	
6	Bit tray	Refer to Desoutter General Catalog
7	Arms	
8	Posco 500	

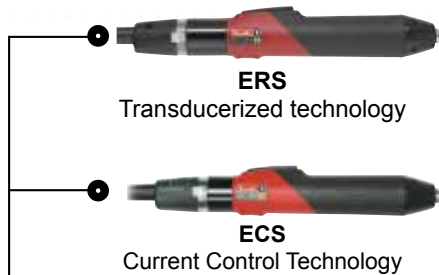


ERROR PROOFING AND FLEXIBILITY

CVIR controller

Advanced control unit with flexibility of technology.

Easy integration in your line with high choice of connectivity

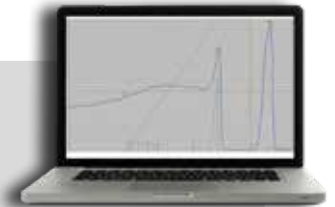
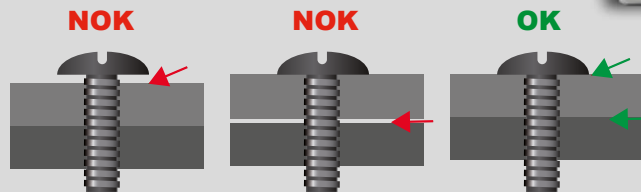


CVIR II	
Part Number	615 932 6810
Cycles	50
Sequence	1
Phases	15
Results	up to 10 000
Curves	10
Tools	ECS/ERS
Strategies	Torque
	Angle
	Seating Detection
	Yield point

Innovative Tightening Strategy

Seating Detection

Detect the screw head contact on your part by **torque rate management**, even with material variation.



Quality Guaranteed

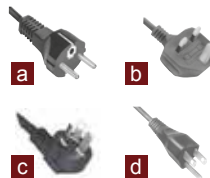
More information on www.desouttertools.com

SOFTWARES, UPGRADES KITS...

Power cord

to be ordered with the controller

PLUG	Description	Part NO.
a	European	615 917 201 0
b	UK	615 917 202 0
c	Chinese	615 917 206 0
d	US	615 917 203 0



Fieldbus / Protocol

Model	Part NO.
Ethernet IP Module	615 927 594 0
Profibus DP Module	615 927 595 0
Profi net Module	615 927 596 0
Devicenet Module	615 927 599 0
CC-Link Module	615 927 598 0
MODBUS TCP Slave	615 927 615 0

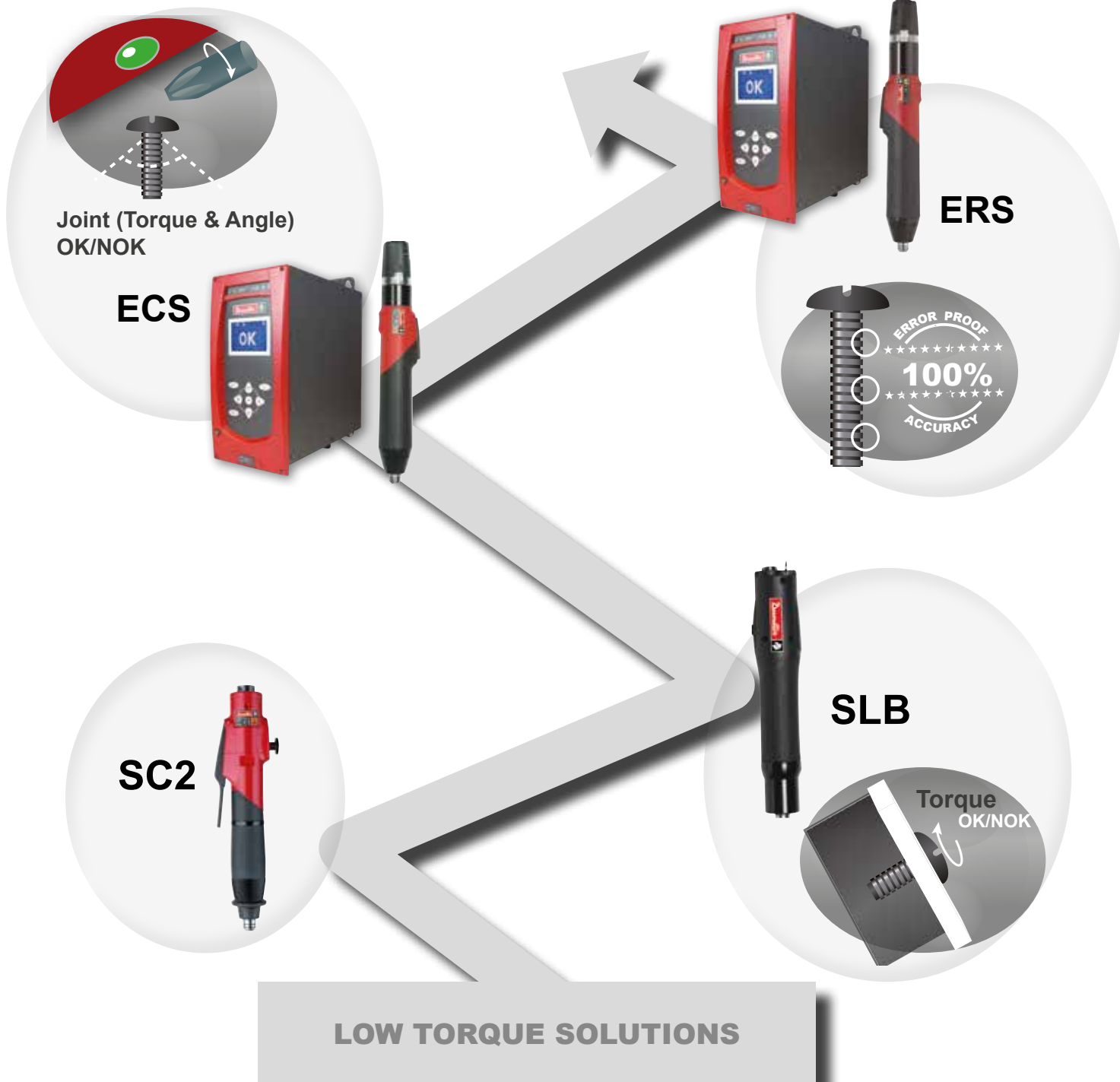
Softwares

Model	Part NO.
CVI PC2000-STD 1 install	615 927 522 0
CVI PC2000 advance 1 install	615 927 523 0
CVI-net 1 controller	615 927 523 0
Open Protocol 5 licences	615 927 581 0

Optional Accessories

Model	Part NO.
PC cable length 2 m (78.7")	615 917 047 0
37 pin D-Sub female I/O adapter	615 919 003 0
Shelf support - Aluminium profile	615 397 403 5
IP54 option	615 932 684 0

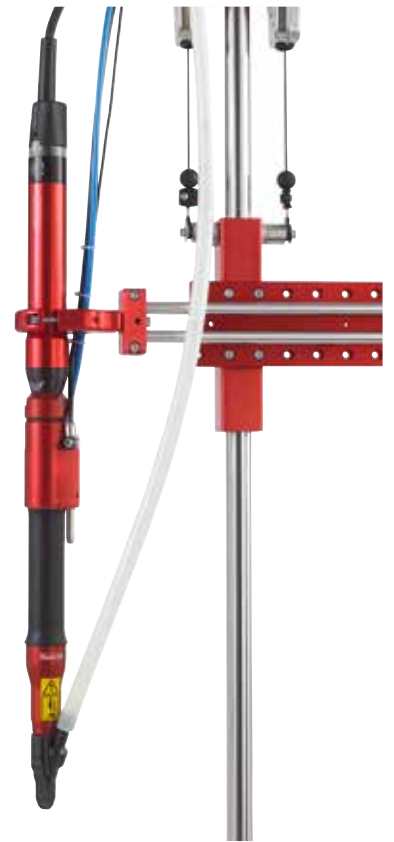
FOR SUPPLIER Low Torque Solutions



PRODUCTIVITY AND ADVANCED ERROR PROOFING

BOOST YOUR PRODUCTIVITY

Complete range of screw feeding solution from simple hand held station to advanced fixtured units to improve your productivity on your assembly line.



DECREASE YOUR TASK TIME



In combination with the **Posco Vision**, an advanced positioning control system with visualisation, the **ERS station** will give a high level of error proofing control and help you to decrease your defects and quality costs.

More information on www.desouttertools.com

SECURE YOUR PROCESS

More Than Productivity



www.desouttertools.com

US
© Copyright 2014
October 2014 - Issue 1